

# CTC & G

Connecticut Cottages and Gardens

COTTAGESGARDENS.COM | SEPTEMBER 2022

FINDING  
HOME





AS SEEN IN  
**CTC&G**  
Connecticut Cottages and Gardens



# ON THE REBOUND

WALLPAPER IS MAKING A COMEBACK, AND IT'S ABOUT TIME! AND NO ROOM IS OFF LIMITS, AS WE'VE LEARNED FROM OUR EXPERT DESIGNERS. HERE ARE SOME OF THEIR FAVORITE GO-TO WALLCOVERINGS.  
PRODUCED BY MARY FITZGERALD



**CHARLOTTE BARNES**  
[charlottebarnes.com](http://charlottebarnes.com)

**QUADRILLE**  
Pera is a wallpaper that I never tire of using. We have it in on the walls of our office. It is one of those papers that is there but is not there." It can provide a wonderful backdrop for framed photographs and art. D&D, [quadrilledesigns.com](http://quadrilledesigns.com).



**NOBILIS**  
I love to use Nobilis' flax toos papers, like Chando, to create a sense of interest and texture on collages. D&D, [nobilis.it](http://nobilis.it)

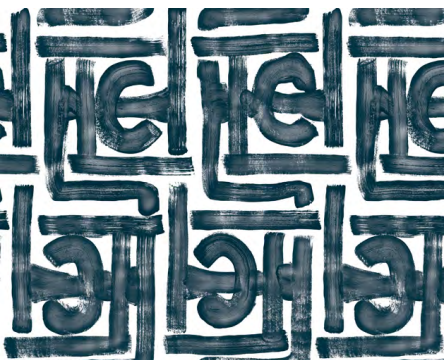


**BETA HEUMAN**  
Beta Heuman's colorful marbled wallpaper is a go-to of mine for the back of bookshelves. shoppe, [betaheuman.com](http://betaheuman.com).

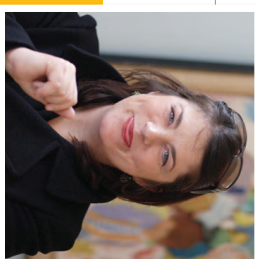
BARNES, HARRISON;  
NELL LANDINO, JR.



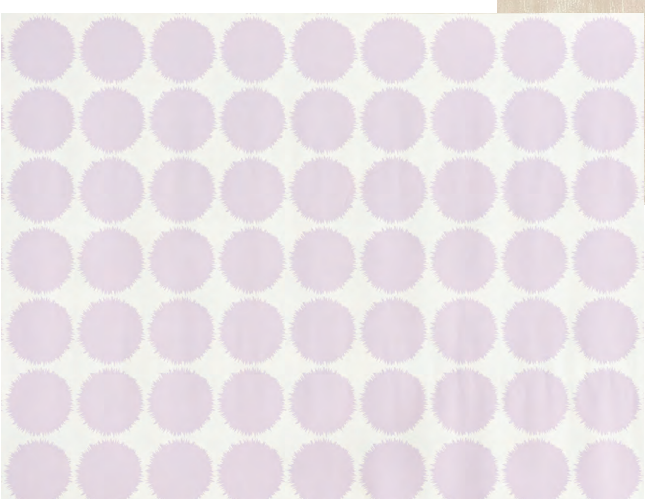
**CONYAN & TOUR**  
Moris is an organic, textured blues and cream geometric wallpaper, perfect for a primary bedroom. It's a great backdrop to statues of green and gold fish of luck. D&D, [conyan.com](http://conyan.com).



**PETER FASANO**  
The bold graphic pattern of Samburu really pops. I used the Nocturne colorway—a dark, soot navy—in a client's mudroom. It provided a dramatic contrast against the stark white, shiplap walls. Available through John Rosselli & Associates, D&D, [johnrosselli.com](http://johnrosselli.com), [peterfasano.com](http://peterfasano.com).



**MICHELLE MORGAN HARRISON**  
Michelle Morgan Harrison Home  
[morganharrisonhome.com](http://morganharrisonhome.com)



**SCHUMACHER**  
Studio Boy's Fuzz from Schumacher is one of my favorites. I used this mid-scale dot for a feminine office. Its playful and super chic and the lavender shade plays well with other colors. D&D, [schumacher.com](http://schumacher.com).



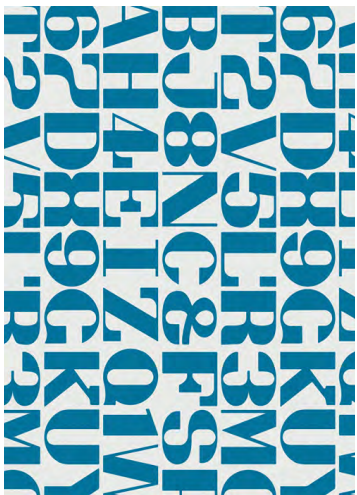


MARKETPLACE



**CLAUDIA KALUR**  
CFK Interiors, cfkinteriors.com

**MAHARAJ**  
I am about to install this abstract wallpaper in a powder room in a modern house here in Litchfield County. It's super fun and would be great in a child's room too. maharaj.com



**LEWIS & WOOD**  
I love British brand Lewis & Wood. The colored papers are reminiscent of Old World designs in sophisticated colorways. The Atlanta pattern is based on a Middle Eastern carpet and is offered in a full- or half-scale size. lewisandwood.co.uk



**PHILIP JEFFRIES**  
I am captivated by the new 'Pumpkin' wallpaper by Philip Jeffries' Bloomsbury. It's a modern take on a traditional floral motif with metallics cascading from the ceiling toward the floor. The print is so rich and fresh in a digitally blocked print on a textured hemp. DJD, philipjeffries.com.



**JULIE TRAVERS**  
I used the Nutcracker paper in the room of our Connecticut country house, and it just makes me so happy! It's dark enough to be moody, but it has a bit of sparkle with the gilt squares and a bit of whimsy. julietravers.com

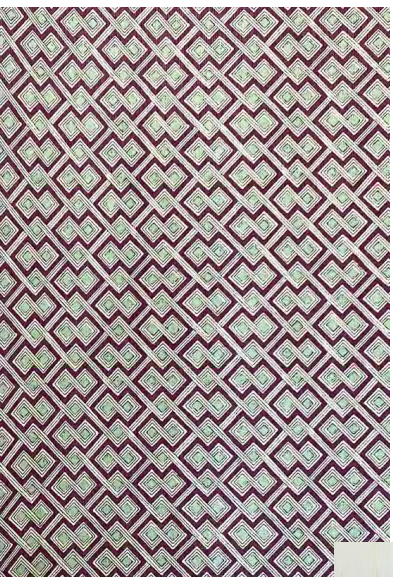


**TWENTY2**  
I use the grasscloth from this local, private-label studio all the time, including on furniture. This one, Japanese Paperweave in Stratus, is great for an urban client. Twenty2.net

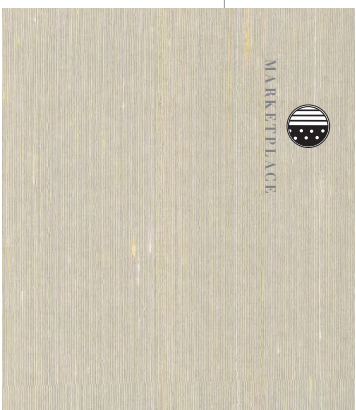


I have Symonias on my list for a future project. Love Zak+Fox fabrics and wallpapers, and this pattern is just stunning—lush and rich. zakandfox.com.

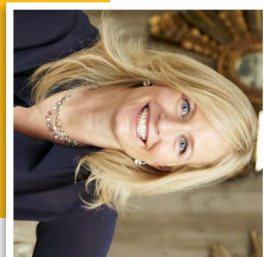
**ZAK+FOX**



**AUX ABRIS**  
Aux Abris wallpapers are gorgeous. The Art of Foliage Garden silk is spectacular in a dining room, and the high-impact Celtic Knots grasscloth (shown here) looks great on a ceiling or the back of bookcases. Available through Art of Foliage & Paperstone. info@artof.com, artof.com.



**CARLISLE & CO.**  
I love simple, woven textures for a living room—linens if more casual and silk if more formal. They create a beautiful backdrop for furniture and art. Michael Carlisle & Co. has reflective metallic and pearlescent properties for organic elegance. Available through Holly Hunt. DSD, hollyhunt.com, carlisco.com.



**AMY ZOU**  
Clarke Horn Interiors  
clarkehorninteriors.com





MARKETPLACE

INNOVATIONS

I love 'Innovations'! It's a great backdrop for office walls. It's subtle and not distracting while working, yet it brings a sophisticated and chic backdrop for those Zoom calls. *Innovations: D&D* [innovationsusa.com](http://innovationsusa.com)



DESIGNERS GUILD

Let's not forget the ceiling, especially if you are spending a considerable amount of time in your work-from-home office space. The graphic and edgy Maridora design by Designers Guild makes the most out of this little wall. It is layered and stylish, balancing the serenity of the walls—the result is an overall design that has that "wow" factor. *Maridora by Designers Guild* [designersguild.com](http://designersguild.com), [designersguild.com](http://designersguild.com)



**STEPHANIE RAPP**  
Stephanie Rapp Interiors  
[stephanierappinteriors.com](http://stephanierappinteriors.com)



MARKETPLACE



**LINNEER HOLLINGSWORTH**  
[linneerhollingsworth.com](http://linneerhollingsworth.com)



PHILLIPS JEFFRIES

Walls with paper that have a sense of movement and texture makes for a really inviting space for any family room. It can read as coastal, organic or sophisticated. Its multilayered mix of materials, with a handcrafted effect, creates any visual and textural interest. I love how it delivers instant architecture, without any additional artwork. This paper is great for warming up those open floor plan spaces to create a sense of flow. *Phillips Jeffries* [phillipsjeffries.com](http://phillipsjeffries.com)



KRAVET

Bianca, offered as a fabric and now a grass paper, is my take on a tie-dye water stripe. I would install it in a family room surrounded by richly toned censured and bleached woods, modern clean-lined sofas, textured pillows and throws, and tons of white. *D&D, NYDC, Kravet.com*



HOLLINGSWORTH: BRENT LEE



MARKETPLACE



KRAVET

From Bahama II, Neo Med is a serene scale graphic that delivers visual interest from a feature wall or on multiple walls enveloping a room. I love the blush colorway and imagine it used in a bedroom, dressing room, primary bath or powder room surrounded by soft, monochromatic hues. I am crazy about it—it's the epitome of a sophisticated, feminine and modernist graphic. *D&D, NYDC, Kravet.com*

KRAVET

Plus, as one of the most sought-after pieces in my collection for Kravet and as a medium-scale abstract floral pattern, offered in five colorways. Printed on a lightly sheened grass paper. It presents as a pattern from nature. I see it as a perfect backdrop for a family room or a powder room where one might be looking for a subtly textured wallcovering. *D&D, NYDC, Kravet.com*

